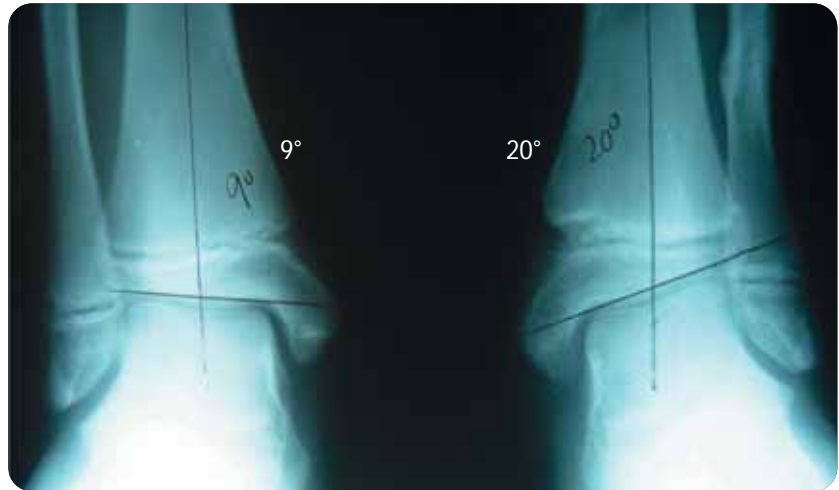


# Ankle Valgus after Left Ankle Fracture

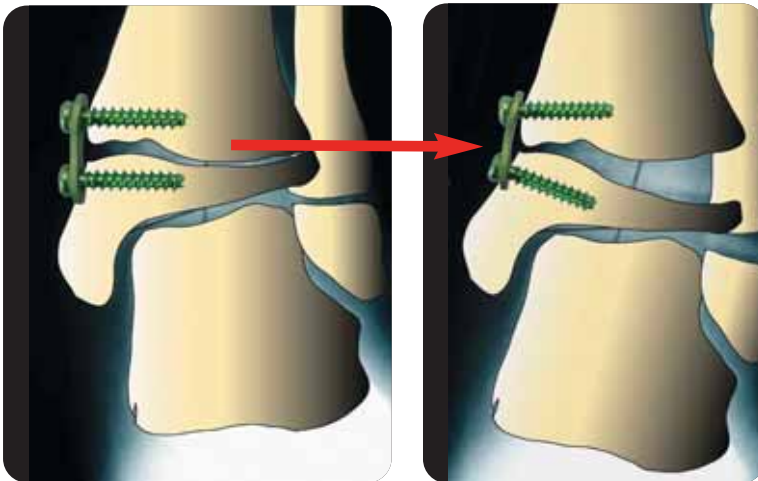
Case study provided by Peter M. Stevens, M.D., University of Utah



12 Yr. Old Boy  
Closed Reduction  
Cast x 6 Weeks



Healed Fracture  
20° Ankle Valgus



Diverging screws function  
like a hinge, avoiding  
physis compression.





4 Months post-op  
Guided Growth



6 Months post-op  
Guided Growth



7 Months post-op  
eight-Plate removed



#### Hemi-Epiphysiodesis and Guided Growth References

- Hemi-Epiphysiodesis for Deformity Management  
P. Stevens, Abstract, IPOS, Orlando, FL, USA, 12/03/2005
- Hypophosphatemic Rickets: The Role of Hemi-epiphysiodesis  
E. Novais, MD and P. Stevens, MD, J. Pediatr. Orthop.,  
Vol. 26, No. 2, March/April 2006
- Hemiepiphysiodesis for Posttraumatic Tibial Valgus  
P. Stevens, Felicity Pease, J. Pediatr. Orthop.,  
Vol. 26, No. 3, May/June 2006
- Guided Growth for Angular Correction  
Peter Stevens, Abstract, POSNA, San Diego, CA, USA,  
May 3-6, 2006
- Hemi-epiphysiodesis: 2006. Rationale, Technique. Applications.  
P. Stevens, Abstract, IPOS No. 3, Orlando, Florida,  
November 2006
- Guided Growth for Angular Correction: A Preliminary Series  
Using a Tension Band Plate  
P. Stevens, J. Pediatr. Orthop., Vold. 27 (3), April/May 2007
- Eight Plate for Temporary Hemiepiphysiodesis to Correct  
Angular Deformities  
J.E. Herzenberg, R. Burhardt, D. Paley, S. Standard  
Abstract (104), J. Child Orthop, Vol. 1 Suppl. 1, March 2007

#### Indications

The eight-Plate is indicated for any angular deformity in a growing child/adolescent who would otherwise require an osteotomy.

#### Contraindications

The eight-Plate should not be used for adult deformities or where the growth plate has closed because of trauma, infection or skeletal maturity.

Your Distributor is: